

W:\SERVER01\Project\2021\21B09- RPX 6000014614 SANS TENDER\8. DRAWINGS\Mech\FIRE\DETECTION\21B09-D-603- BLOCK C\PROPOSED\21B09-D-603- LAHAE LA SARS BLOCK C GROUND STOREY PROPOSED DETECTION LAYOUT_2022-07-20.dwg, 2022/07/20 12:34:46 PM, LS

Local Authority stamp



SITE LOCATION

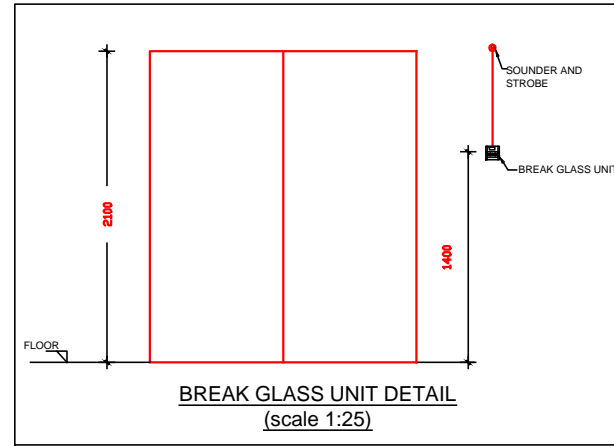


IMAGE 1 - SMOKE DETECTOR



IMAGE 2 - BREAK GLASS UNIT



IMAGE 3 - SOUNDER & STROBE BEACON



IMAGE 4 - FIRE PANEL



IMAGE 5 - HEAT DETECTOR

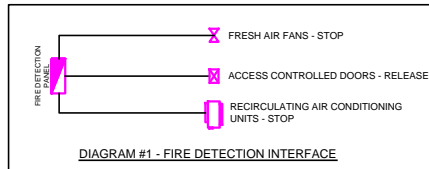


DIAGRAM #1 - FIRE DETECTION INTERFACE




IMAGE 6 - PH30 FIRE RATED CABLE

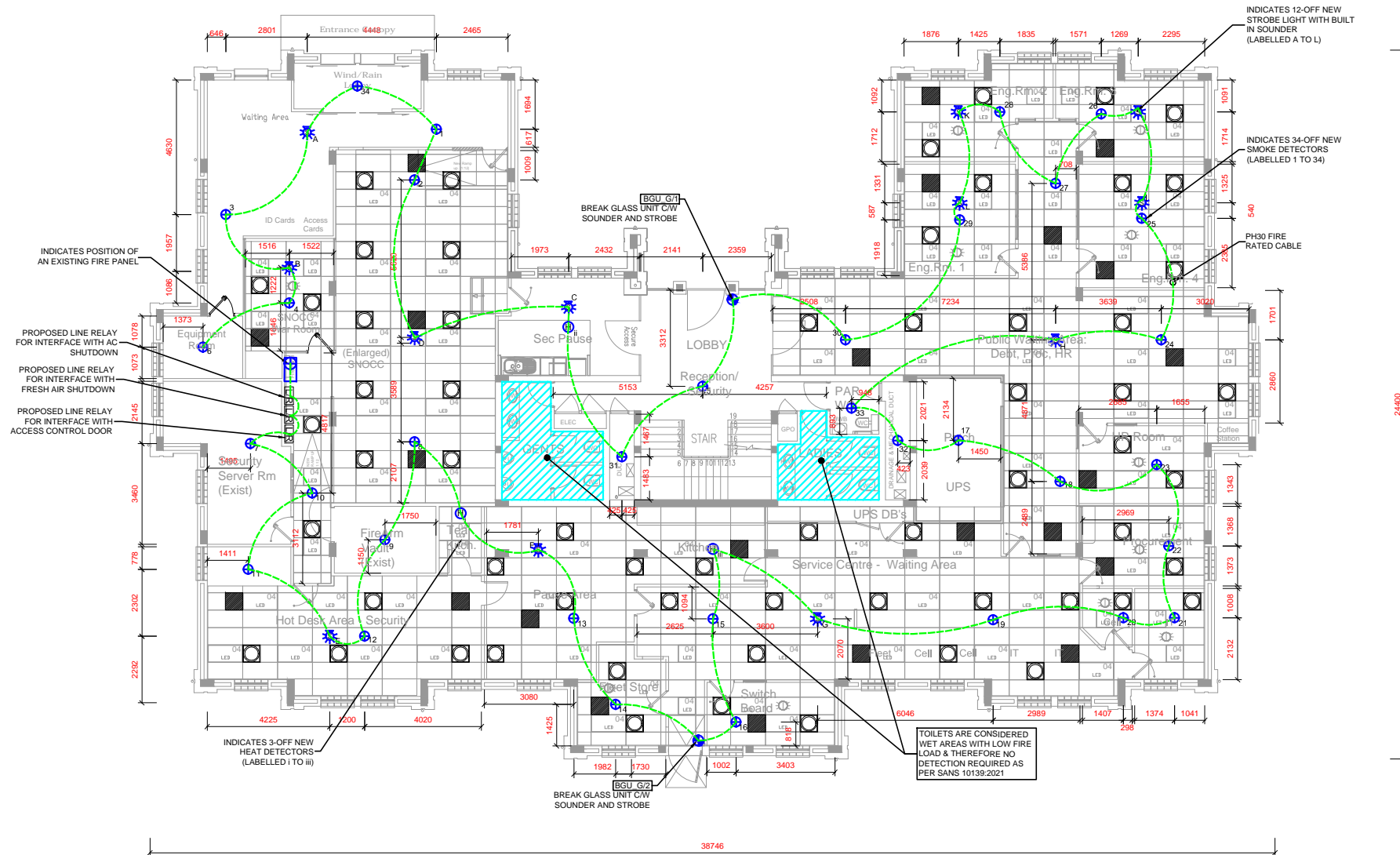
FIRE DETECTION NOTES	
FIRE DETECTION DESIGN IN ACCORDANCE WITH SANS 10139	
1. SPACE CLASSIFICATION = G1 - OFFICE	
2. FLOOR AREA = 657 m ²	
3. POPULATION = 1/SEAT = 41 PEOPLE	
4. DETECTION CATEGORY = L1 SYSTEM	
5. FIRE RESISTANT CABLES =PH30 IN ACCORDANCE WITH SANS 10139	
6. AUDIBLE ALARM SOUND LEVEL = 65 DBA	
7. WIRE WAYS = 25mm PVC THROUGHOUT C/W METAL SADDLES EVERY 500mm	
8. THE FIRE DETECTION SYSTEM MUST BE INTERFACED WITH THE FOLLOWING	
- DUCTED A/C SYSTEM TO SHUT DOWN	
- FRESH AIR SYSTEM TO SHUT DOWN	
- ACCESS CONTROLLED DOORS TO RELEASE	

SCOPE OF WORK	
1. SUPPLY AND INSTALL NEW DETECTION AND EVACUATION EQUIPMENT AS INDICATED.	
- 34-OFF NEW SMOKE DETECTORS	
- 3 -OFF NEW HEAT DETECTORS	
- 2-OFF BREAK GLASS UNITS C/W SOUNDER AND STROBE LIGHTS	
- 12-OFF STROBE LIGHTS WITH BUILT IN SOUNDER	
- 3 -OFF NEW LINE RELAYS	
2. COMPLETE A FUNCTIONALITY TEST TO ENSURE THE SYSTEM OPERATES SATISFACTORILY UNDER A FIRE CONDITION.	
3. CONDUCT A SOUND LEVEL TEST FOR THE EVACUATION SYSTEM.	
4. TRAIN OCCUPANTS ON THE SYSTEM INSTALLATION.	

FIRE DETECTION LEGENDS & COUNT			
SYMBOL	REFERENCE	DESCRIPTION	QTY.
⬡	BG	BREAK GLASS UNIT WITH SOUNDER AND STROBE	2
⬡	SS	STROBE LIGHT WITH BUILT-IN SOUNDER	12
⬡	SD	SMOKE DETECTOR	34
⬡	DP	FIRE DETECTION PANEL	1
⬡	HD	HEAT DETECTOR	3
⬡	LR	LINE RELAYS	3
—		PH30 FIRE RATED CABLE	392m
—		Ø25mm CONDUIT LINK	196m

REVISIONS				
No	Date	Description	Rev By	Ckd By
A	2021-06-29	ISSUED FOR INFORMATION	B.N	H.R
B	2021-08-04	DRAWING UPDATED TO SUIT NEW ARCHITECTURE	S.M	H.R
C	2022/07/14	DRAWING UPDATED W.R.T - NEW ARCHITECTURE ADDED - ISSUED FOR TENDER	LS	H.R

		09 Plantanus Street Kuijsriver 7580		
		Ctll.: (072) 948 4470 Tel.: (021) 903 1407 Email: info@consultmech.co.za		
PROJECT	LAHAE LA SARS - BLOCK C			
	BROOKLYN			
DWG TITLE	GROUND STOREY - PROPOSED			
	DETECTION LAYOUT			
DWG NUMBER	21B09-D-603-03		REV. <table border="1"><tr><td>C</td></tr></table>	C
C				
DESIGNED BY	L.N SIBIYA	SCALE	1:100 @ A1	
CHECKED BY	H.D ROUX	ECSA NUMBER	201070151	
APPROVED BY	H.D ROUX	ECSA NUMBER	201070151	
COPYRIGHT AND RIGHT OF REPRODUCTION OF THIS DRAWING OR ANY PORTION THEREOF IS RESERVED BY THE ENGINEERS				



GROUND STOREY - PROPOSED DETECTION LAYOUT (Scale 1:100)

ISSUE DATE	2022-07-14	REVISION	C
FOR INFORMATION			
FOR APPROVAL			
FOR TENDER			
FOR CONSTRUCTION			
AS-BUILT			